

PEERS ON STYLE

DISCOVER STYLES YOU LOVE



#40hangercloset

Welcome to the **Style Discovery Lookbook!** This is your guide to discovering styles you love. In these pages, you'll find color palettes, visuals, and definitions for nine different fashion styles.

Use this Lookbook as a tool to help you understand and embrace your personal style.

As you scroll through the pages you'll learn about the timeless elegance of Classic Style, the free-spirited Boho Vibes, and the bold statements of Avant-Garde. Take note of the colors you are drawn to, the outfits that make you smile and the overall aesthetic that feels most like you. And don't be surprised if you're drawn to a few different styles.

Learning about various fashion styles will help you more clearly define your own unique personal style - enabling you to build a wardrobe that you love and feel great wearing.

My hope for you is that you would discover and embrace the unique woman God created you to be, celebrating and releasing her to be her authentic self.

xox,

Marisa

CLASSIC

STREET

BOHEMIAN

PREPPY

MINIMALIST

VINTAGE

ECLECTIC

ATHLEISURE

AVANT-GARD

#40hangercloset

CLASSIC STYLE

Classic fashion style is characterized by timeless elegance, simplicity, and sophistication. This style embraces enduring silhouettes, clean lines, and neutral color palettes to create a refined and polished look. Classic fashion style transcends trends and remains a go-to choice for individuals who appreciate a timeless and sophisticated wardrobe.

KEY FEATURES

Timeless Silhouettes: Timeless silhouettes that withstand fashion trends. Tailored pieces like A-line dresses, pencil skirts, blazers, and well-fitted trousers are common.

Neutral Colors: The color palette is usually neutral and includes shades like black, white, navy, gray, and beige. These colors contribute to the understated and versatile nature of classic fashion.

Quality Fabrics: Classic fashion emphasizes high-quality fabrics such as wool, cotton, silk, and cashmere. The focus is on durability, comfort, and a luxurious feel.

Minimalistic Approach: Classic style tends to adopt a minimalistic approach, avoiding excessive embellishments or flashy details. Instead, it highlights the beauty of simplicity and clean lines.

Tailoring and Fit: Tailoring is crucial in classic fashion. Well-fitted garments enhance the sophistication of the style, emphasizing the wearer's body shape.

Versatility: Classic pieces are known for their versatility, allowing them to be easily mixed and matched. This versatility makes classic fashion suitable for various occasions, from work to formal events.

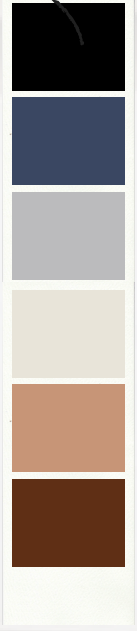
Investment Pieces: The classic wardrobe often includes investment pieces that stand the test of time. These items may be pricier, but their durability and enduring style make them worthwhile.

Crisp Tailoring: Attention to detail, including crisp tailoring and well-pressed clothing, contributes to the overall polished appearance of classic fashion.

Classic Style

neutral colors

*timeless
elegant
refined*



Classic style emphasizes clean lines, neutral colors, and simple silhouettes.

STREET STYLE

Street style captures the spirit of self-expression in urban environments, celebrating diversity, and reflecting the ever-changing landscape of fashion influenced by the streets. It's a style that encourages individuals to embrace their uniqueness and make a statement through their clothing choices. It is characterized by its edgy, individualistic, and often casual vibe.

KEY FEATURES

Urban Influence: Street style is heavily influenced by the energy and trends of urban environments. It captures the essence of city life and reflects the diverse styles seen on the streets.

Casual and Comfortable: Street style often prioritizes comfort, with casual and relaxed silhouettes taking center stage. T-shirts, jeans, sneakers, and hoodies are common staples.

Mix of High and Low Fashion: Street style seamlessly blends high-end and affordable fashion pieces. It's not uncommon to see luxury accessories paired with thrifted or vintage items, creating a unique and accessible aesthetic.

Bold and Eclectic: Street style encourages bold and eclectic choices. Vibrant colors, patterns, and graphic prints are embraced, allowing individuals to express their personality through their clothing.

Youthful and Trendy: Street style often caters to a younger demographic, embracing the latest trends and experimental fashion choices. It reflects the ever-evolving nature of urban fashion scenes.

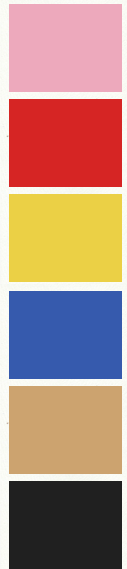
Athletic Influences: Sportswear and athletic-inspired elements are frequently integrated into street style. Sneakers, joggers, and bomber jackets are popular items that bring a sporty edge to the look.

Mixing Subcultures: Street style is known for its ability to blend elements from various subcultures. Punk, hip-hop, skater, and vintage influences may coexist in a single outfit, creating a diverse and layered aesthetic.

Self-Expression: Street style is a form of self-expression, allowing individuals to showcase their unique identities through clothing. It encourages creativity and individualism.

Street Style

*wide range
of colors*



*casual
edgy*



features casual,
edgy looks with
influences from
streetwear,
sneakers, and bold
accessories.



BOHEMIAN (OR BOHO) STYLE

Bohemian style is a celebration of individuality, freedom, and a connection to the artistic and natural elements of the world. It is a free-spirited and eclectic fashion approach characterized by its relaxed, unconventional, and whimsical aesthetic.

KEY FEATURES

Flowy Silhouettes: Bohemian fashion embraces loose and flowy silhouettes. Maxi dresses, peasant blouses, and wide-legged pants contribute to the relaxed and laid-back vibe.

Natural Fabrics: Boho style often favors natural fabrics such as cotton, linen, and flowing materials like chiffon. These fabrics enhance the comfort and ease associated with the style.

Earth Tones and Rich Hues: The color palette of Bohemian style is influenced by nature and includes earthy tones such as browns, greens, and rust, as well as rich jewel hues like deep purples, blues, and reds.

Layering: Layering is a key element of Bohemian fashion. Fringed vests, kimono-style jackets, and layered accessories create a visually interesting and relaxed look.

Prints and Patterns: Boho style embraces a variety of prints and patterns, including floral motifs, paisley, tie-dye, and ethnic prints. Mixing and matching different patterns is common.

Natural and Ethnic Elements: Bohemian style often incorporates natural and ethnic elements such as wooden beads, feathers, and fringe. These elements contribute to the earthy and bohemian aesthetic.

Vintage and Thrifted Finds: Vintage and thrifted pieces are frequently embraced in Boho style. Unique and one-of-a-kind items contribute to the individualistic and bohemian vibe.

Barefoot or Boho Footwear: Bohemian fashion may include barefoot styles, sandals, or boots with a boho flair, such as fringed or embroidered designs.

Bohemian (Boho) Style

*free-spirited
eclectic*

*earthy and
jewel hues*



often characterized by flowy fabrics, floral prints, and a mix of textures and accessories.

PREPPY STYLE

Preppy style, often associated with classic American collegiate fashion, is characterized by a clean, polished, and timeless aesthetic. It reflects a refined and sophisticated look inspired by traditional East Coast Ivy League attire. Preppy style reflects a timeless and sophisticated approach to fashion. It's about embracing classic pieces, refined details, and a clean aesthetic.

KEY FEATURES

Tailored Silhouettes: Preppy fashion favors well-tailored and structured silhouettes. Items like polo shirts, button-down shirts, khaki pants, blazers, and A-line skirts contribute to the polished and put-together appearance.

Neutral Color Palette: The color palette of preppy style is often neutral and includes classic shades such as navy, white, beige, and pastels like light pink and baby blue. These colors create a cohesive and sophisticated look.

Classic Prints: Preppy fashion incorporates classic prints such as stripes, plaids, and checks. These prints are often used in shirts, skirts, and dresses, contributing to the timeless and traditional feel.

Quality Fabrics: High-quality fabrics such as cotton, cashmere, and wool are preferred in preppy style. The emphasis is on durable materials that provide both comfort and a refined appearance.

Collared Shirts and Sweaters: Collared shirts, especially polo shirts, are a staple in preppy fashion. Sweaters, often worn over the shoulders or tied around the neck, add a touch of sophistication.

Khakis, Chinos and Pleated Skirts: Khaki pants, chinos, and pleated skirts are essential in preppy wardrobes. These versatile bottoms can be paired with various tops and contribute to the clean and tailored appearance.

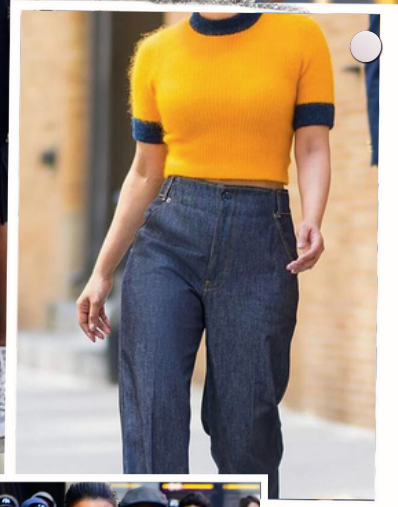
Brands with Heritage: Preppy fashion often includes well-established brands with a heritage, such as Ralph Lauren, Brooks Brothers, and J.Crew. These brands are known for their classic and quality pieces.

Emphasis on Tradition: Preppy style often draws inspiration from collegiate and yacht club aesthetics. Blazers with crests, letterman jackets, and collegiate scarves are part of this traditional influence.

Preppy Style

nautical & collegiate

Classic polished collegiate



Often includes clean-cut lines, tailored pieces, and a focus on casual elegance.

MINIMALIST

MINIMALIST STYLE

Minimalist style is a sleek and pared-down approach to fashion that values simplicity, clean lines, and a focus on essential elements. It embraces a less-is-more philosophy, emphasizing quality over quantity and encourages a mindful and intentional approach to fashion, emphasizing the importance of well-chosen basics and a refined aesthetic that transcends trends.

KEY FEATURES

Clean Silhouettes: Minimalist fashion favors clean and streamlined silhouettes. Simple shapes, straight lines, and well-defined structures contribute to the overall understated aesthetic.

Neutral Color Palette: The color palette of minimalist style is predominantly neutral, often featuring whites, blacks, grays, and beige. This restrained color scheme enhances the simplicity and versatility of the wardrobe.

High-Quality Fabrics: Minimalist fashion places a premium on high-quality fabrics such as cotton, linen, wool, and cashmere.

Limited Prints and Patterns: Prints and patterns are kept to a minimum, if at all present. When used, they are usually simple and geometric, contributing to the overall clean and uncluttered look.

Monochromatic Looks: Monochromatic outfits, where different shades of a single color are combined, are a common feature of minimalist style. This creates a cohesive and harmonious appearance.

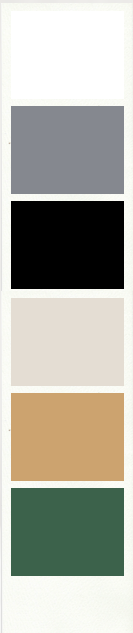
Emphasis on Fit: In minimalist fashion, fit is crucial. Well-tailored pieces enhance the clean lines and simplicity of the overall look, creating a polished and put-together appearance.

Quality Over Quantity: The minimalist wardrobe focuses on quality pieces that stand the test of time.

Lack of Excessive Detail: Minimalist style avoids excessive details, embellishments, or unnecessary frills. Instead, it relies on the beauty of simplicity.

Minimalist Style

*neutral and
subdued palette*



*simplistic
clean*



often involves
neutral colors,
simple shapes, and
a lack of excessive
accessories.



VINTAGE/RETRO STYLE

Vintage or retro style is a nostalgic and classic approach to fashion that draws inspiration from previous eras, typically from the mid-20th century or earlier. This style celebrates the timeless appeal of bygone fashion trends and often incorporates elements from specific decades. Vintage/retro style is a journey through fashion history, allowing individuals to express their unique taste while paying homage to the iconic looks of yesteryears.

KEY FEATURES

Nostalgic Silhouettes: Vintage fashion embraces silhouettes that were popular in specific decades, such as A-line dresses from the 1950s or bell-bottom pants from the 1970s. The emphasis is on recreating the iconic shapes of the past.

Diverse Color Palette: Vintage style often features a diverse and bold color palette. While certain eras may have favored specific colors, there is a wide range of hues used in vintage fashion, including vibrant reds, pastel pinks, and earthy tones.

Classic Fabrics: Fabrics in vintage fashion vary based on the era but often include classic materials like silk, wool, denim, and chiffon.

Bold Prints and Patterns: Vintage fashion embraces polka dots, floral prints, stripes, gingham and paisley, adding a playful and expressive touch to outfits.

Mix of Eras: Vintage style often involves mixing elements from different eras. This eclectic approach allows individuals to create personalized looks by combining iconic pieces from various periods.

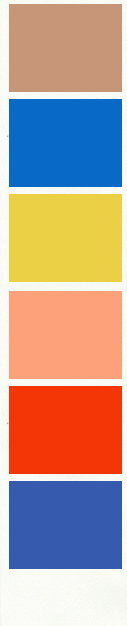
Customization and DIY: Vintage enthusiasts often engage in do-it-yourself (DIY) projects, such as customizing clothing or accessories to achieve a one-of-a-kind look, adding a personal touch to the style.

High-Waisted Styles: Many vintage styles feature high-waisted bottoms, whether it's skirts, trousers, or shorts. This accentuates the waistline and contributes to the classic aesthetic.

Timeless Elegance: Vintage style is about capturing the timeless elegance of the past. While it may incorporate trends from specific eras, the goal is to create looks that transcend time and maintain a sense of enduring charm.

Vintage or Retro Style

varied based on era



involves wearing clothing from a specific time period or incorporating vintage elements into modern outfits



nostalgic individualistic

ECLECTIC STYLE

Eclectic style is a diverse and unconventional approach to fashion that involves blending elements from various genres, eras, and cultural influences. It is characterized by a fearless mixing and matching of different styles to create a unique and personalized aesthetic. Eclectic style is a celebration of diversity, freedom, and self-expression within the realm of fashion.

KEY FEATURES

Varied Silhouettes: Eclectic fashion embraces a wide range of silhouettes, from flowy bohemian dresses to structured blazers. There are no strict rules, allowing for experimentation with different shapes and cuts.

Bold and Diverse Color Palette: Eclectic style may include vibrant hues, patterns, and even clashing colors, creating a visually dynamic and expressive look.

Mix of Fabrics: Eclectic fashion involves combining various fabrics and textures in a single outfit. This could include lace, leather, denim, silk, and more, adding depth and interest to the overall ensemble.

Playful Prints and Patterns: Mixing florals with stripes, geometric designs with animal prints, and other unexpected combinations contribute to the eclectic and individualistic vibe.

Vintage and Modern Fusion: Eclectic fashion seamlessly combines vintage pieces with contemporary items. This fusion allows for the incorporation of timeless classics alongside modern, trendy elements.

Mixing High and Low Fashion: Eclectic style doesn't adhere to the distinction between high-end and budget-friendly fashion. It encourages mixing high-fashion pieces with thrift store finds, creating an inclusive and accessible approach to style.

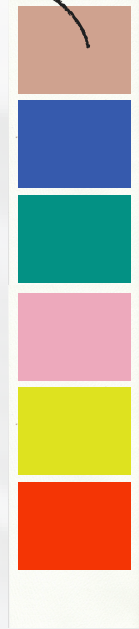
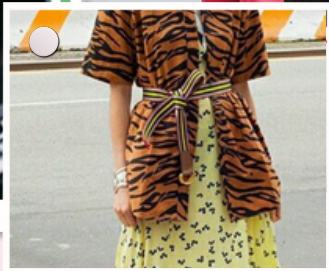
Unconventional Pairings: This may involve combining formal and casual pieces, mixing sportswear with elegant attire, or blending masculine and feminine elements in a single look.

Expressive Individualism: At its core, eclectic style is about expressing individualism and embracing personal creativity. There are no strict guidelines.

Eclectic Style

*diverse
creative*

*wide range
of colors*



A mix of various styles and influences that often involves combining unexpected elements.

ATHLEISURE STYLE

Athleisure or sporty style is a contemporary and versatile approach to fashion that seamlessly combines athletic and casual elements. This style is inspired by activewear and sports attire but is designed for everyday wear. Athleisure style represents the fusion of fashion and function for individuals who prioritize both an active lifestyle and a trendy appearance.

KEY FEATURES

Athletic Silhouettes: Athleisure embraces athletic silhouettes that are comfortable and conducive to movement. This includes items like leggings, joggers, hoodies, and sporty jackets, creating a laid-back and functional aesthetic.

Neutral Colors: The color palette in athleisure style emphasizes neutral tones like black, gray, and white, although bold and vibrant colors can be introduced.

Performance Fabrics: Athleisure prioritizes performance fabrics such as moisture-wicking materials, spandex, and breathable textiles. These fabrics offer comfort, flexibility, and functionality.

Athletic Prints and Logos: Sporting prints, logos, and branding elements are common in athleisure style. This includes recognizable logos from sports brands and athletic-inspired prints.

Sneakers as Statement Pieces: Whether it's classic athletic sneakers or trendy, fashion-forward styles, sneakers contribute to the sporty and casual vibe of athleisure style.

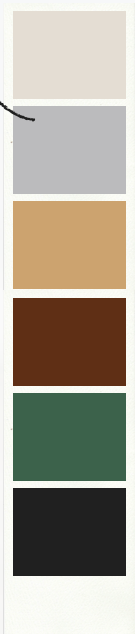
Effortless Accessories: Accessories in athleisure style are typically minimal and functional. This may include sporty watches, backpacks, and caps, enhancing the overall athletic and casual look.

Mixing Sportswear with Casual Pieces: Athleisure seamlessly combines sportswear with casual pieces. This could involve pairing leggings with an oversized hoodie or athletic sneakers with jeans, creating a balanced and comfortable ensemble.

Emphasis on Comfort: The style encourages the use of stretchy fabrics, loose fits, and breathable materials, ensuring that individuals feel at ease while maintaining a stylish appearance.

Sporty or Athleisure Style

*earthy
and neutral*



*comfy
stylish*

often includes sneakers, leggings, and sporty accessories.



AVANT-GARDE

Avant-Garde (or High Fashion) style is an experimental approach to fashion that pushes the boundaries of traditional design concepts. This style is characterized by bold creativity, innovation, and a departure from conventional fashion norms. It thrives on creativity, innovation, and the expression of bold, unconventional ideas, making a powerful statement about the intersection of fashion and artistic expression.

KEY FEATURES

Unconventional Silhouettes: Avant-garde fashion often features unconventional and exaggerated silhouettes that challenge the traditional notions of garment structure. This can include avant-garde shapes, asymmetry, and non-traditional proportions.

Daring Color Palette: High fashion/avant-garde style embraces a daring and sometimes unconventional color palette. This may involve vibrant and contrasting colors, metallic finishes, or even monochromatic looks that create a visually striking impact.

Innovative Fabrics: Avant-garde designers frequently experiment with innovative fabrics and materials. This can include futuristic textiles, unconventional combinations of materials, and the use of cutting-edge technologies to create unique textures and finishes.

Abstract Prints and Textures: Prints and textures in high fashion/avant-garde style are often abstract and experimental. Designers may incorporate avant-garde patterns, textures, and graphic elements that challenge traditional design aesthetics.

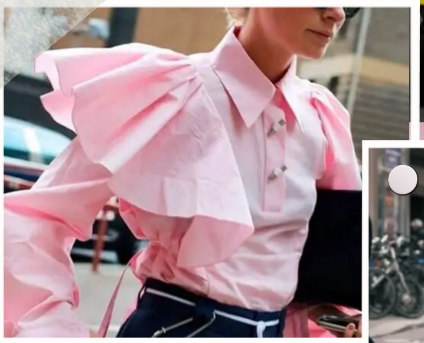
Architectural and Sculptural Elements: Avant-garde fashion often blurs the lines between fashion and art by incorporating architectural and sculptural elements into garments.

Experimental Layering: Avant-garde fashion often involves experimental layering techniques. This can include the use of oversized or deconstructed layers, creating visually complex and thought-provoking compositions.

High Fashion or Avant-Garde Style

*bold, unexpected
color combos*

*cutting-edge
experimental*



involves unique and avant-garde designs and often pushes the boundaries of traditional fashion

PERSONAL

MAKE IT PERSONAL

I have items in my wardrobe (that I love wearing) that fit the following styles:

The styles I'm most drawn to are:

What I like most about those styles is:

The color palettes I am most drawn to are:

1-3 fashion styles I would like to have be a part of my personal style are:

- CLASSIC
- STREET
- BOHEMIAN
- PREPPY
- MINIMALIST
- VINTAGE
- ECLECTIC
- ATHLEISURE
- AVANT-GARD

#40hangercloset